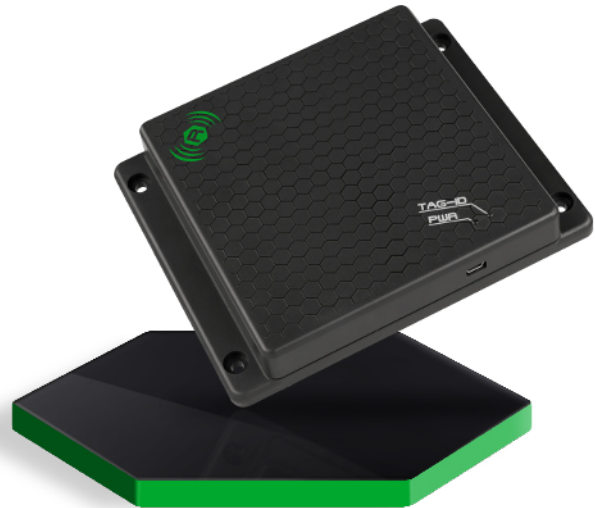




R1250I

# Tile

Compact Desktop  
RAIN RFID Reader



## BENEFITS

Compact size

Cost effective



USB



HID

## Features

- RAIN RFID (UHF EPC Class1 Gen2, ISO 18000-63) compliant
- USB power and communication
- HID profile on USB available
- Integrated circular polarized antenna
- Compact form factor

## Applications

- Points of sale
- Access control
- Tag Programming Stations
- Document tracking
- Inventory Management

## Overview

The **Tile** (model R1250I), desktop reader of the easy2read® product line, is a RAIN RFID reader with integrated antenna for short to medium range applications.

The reader is powered and controlled directly by an USB cable, thus allowing to read RAIN RFID tags in an easy desktop environment.

Thanks to its compact size, the **Tile** reader is the perfect choice for various applications such as points-of-sale, document tracking, tag programming stations, access control and so on. It can also be used as a building block for smart shelves and smart displays.

The **Tile** reader supports the HID profile (native keyboard emulation) allowing to interact directly with legacy applications, office automation SW or any other generic solution requiring manual input.

Being compliant with both European and US regulatory environments, the Tile reader allows installations in various countries worldwide as needed by retailers, forwarders, warehouses and other global organizations.

The core components of the Tile reader are the CAEN RFID **QuarkUp** module, a top performing ultra-compact RAIN RFID module, and the **Quad**, a compact circular polarized antenna designed by CAEN RFID.



## Technical Specification Table

<b>Frequency Range</b>	<ul style="list-style-type: none"> <li>• 865.600÷867.600 MHz (ETSI EN 302 208 v. 3.1.1) (Mod. R1250IE, R1251IENF)</li> <li>• 902÷928 MHz (FCC part 15.247) (Mod. R1250IU, R1251IUNF)</li> </ul>
<b>Frequency Tolerance</b>	±10 ppm over the entire temperature range
<b>RF Power</b>	<ul style="list-style-type: none"> <li>• Configurable in 18 levels from 8 dBm ERP to 25 dBm ERP (Mod. R1250IE)</li> <li>• Configurable in 18 levels from 8.5 dBm EIRP to 25.5 dBm EIRP (Mod. R1250IU)</li> <li>• Configurable in 18 levels from 0 dBm ERP to 17 dBm ERP (Mod. R1250IENF, R1251IUNF)</li> </ul>
<b>Output Power Accuracy</b>	± 1 dB
<b>Number of Channels</b>	<ul style="list-style-type: none"> <li>• 4 channels (compliant to ETSI EN 302 208 v. 3.1.1) (Mod. R1250IE)</li> <li>• 50 hopping channels (compliant to FCC part 15.247) (Mod. R1250IU)</li> </ul>
<b>Standard Compliance</b>	EPC Class 1 Gen 2 - ISO18000-63
<b>Internal Antenna Gain</b>	<ul style="list-style-type: none"> <li>• 0.2 dBi (typical) (Mod. R1250IE)</li> <li>• 0.7 dBi (typical) (Mod. R1250IU)</li> </ul>
<b>Antenna</b>	<ul style="list-style-type: none"> <li>• Integrated Circular Polarized Antenna (Mod. R1250IE, R1250IU)</li> <li>• Integrated UHF Near Field Antenna (Mod. R1251IENF, R1251IUNF)</li> </ul>
<b>Connectivity</b>	<ul style="list-style-type: none"> <li>• Mini USB type B plug connector</li> <li>• USB 2.0 Full Speed (12 Mbit/s) device port</li> <li>• Must be connected to two High-Power USB Type A ports (500 mA @ VBUS)</li> <li>• HID profile available</li> <li>• Virtual COM Port parameters: <ul style="list-style-type: none"> <li>• Baudrate up to 115.200 kbit/s</li> <li>• Databits: 8</li> <li>• Stopbit: 1</li> <li>• Parity: none</li> <li>• Flow control: none</li> </ul> </li> </ul>
<b>User Interface</b>	<ul style="list-style-type: none"> <li>• Red LED: Power</li> <li>• Blinking Green LED: Tag Detection</li> </ul>
<b>USB Cable Length</b>	<ul style="list-style-type: none"> <li>• 1 m (Mod. R1250IE, R1250IU)</li> <li>• 1.8 m (Mod. R1251IENF, R1251IUNF)</li> </ul>
<b>Power Supply</b>	<ul style="list-style-type: none"> <li>• 5 V ± 5% - DC bus powered (USB)</li> <li>• Max. 650 mA</li> </ul>
<b>Dimensions</b>	<ul style="list-style-type: none"> <li>• (W)125 x (L)125 x (H)25 mm<sup>3</sup></li> <li>• 4.92 x 4.92 x 0.98 inches<sup>3</sup></li> </ul>
<b>Operating Temperature</b>	-10 °C to +55 °C
<b>Weight</b>	<ul style="list-style-type: none"> <li>• 220 g max. (Mod. R1250IE, R1250IU)</li> <li>• 200 g max. (Mod. R1251IENF, R1251IUNF)</li> </ul>

## Ordering Options

<b>WR1250IEXBAA</b>	Tile - ETSI version - Black	<b>WR1251IENFBA</b>	Tile - ETSI version - Black - Near Field
<b>WR1250IEXBFL</b>	Tile - ETSI version - Grey - Flanged	<b>WR1251IUNFBA</b>	Tile - FCC version - Black - Near Field
<b>WR1250IUXBAA</b>	Tile - FCC version - Black		
<b>WR1250IUXBFL</b>	Tile - FCC version - Grey - Flanged		

